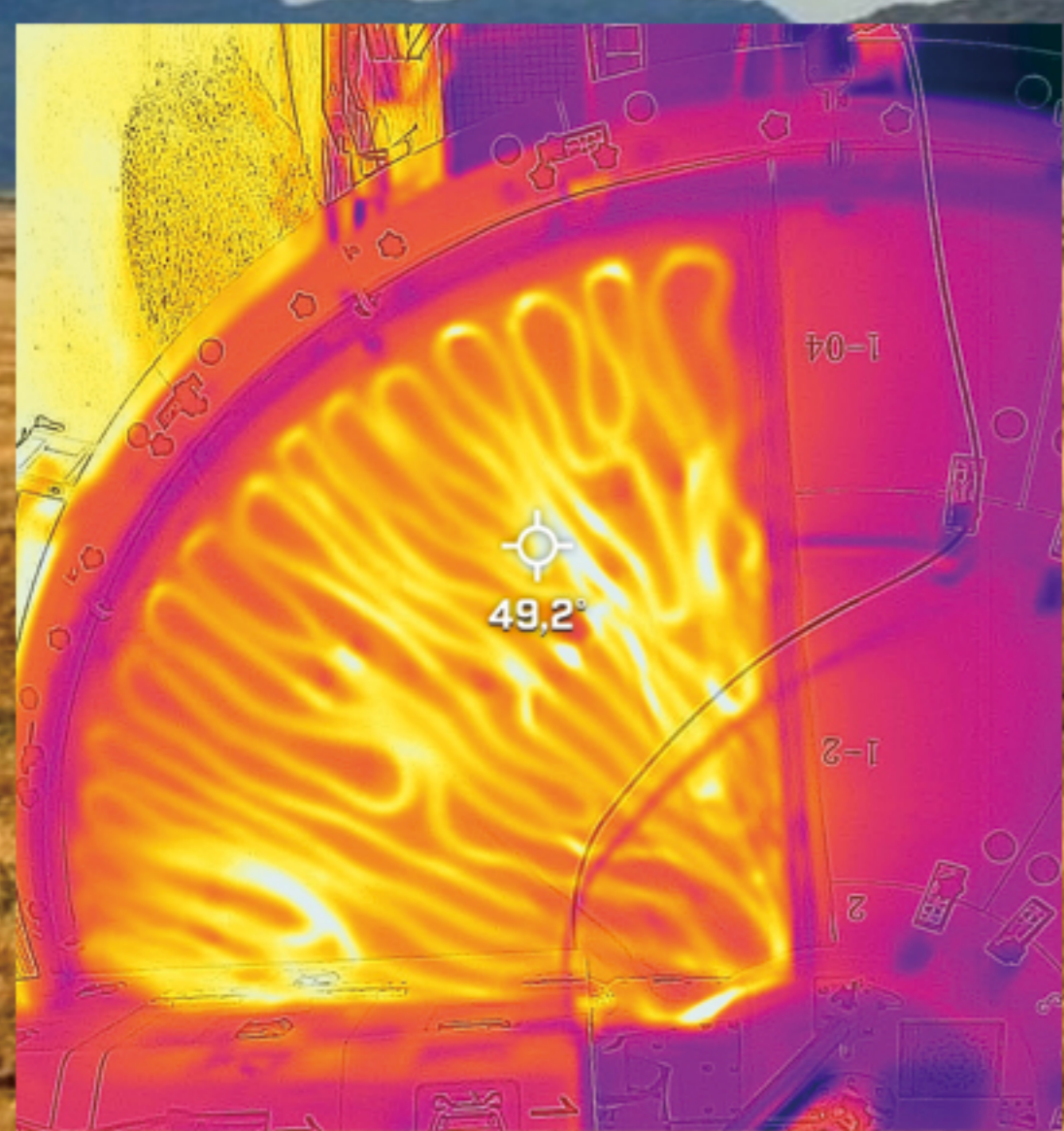


PALS De-Ice
Sensor

Heater Pads



PALS De-Ice Controller *

PDI SERIES

The PALS De-icing system consists of a factory pre-wired control unit, heater pads for reflector coverage. All systems are engineered to be easily assembled, installed and operated.

The control unit has three modes of operation: Automatic, Manual Off, and Manual On. The Automatic mode allows the control to monitor the ambient temperature and sense the presence of precipitation. An ambient temperature of fewer than 4 degrees C and the presence of precipitation activate heaters. The heaters will remain on for a factory preset time of one hour longer than conditions warrant. Control units are factory preset to operate on 120 to 240 volts single or three-phase powers. The larger systems have a control unit with a remote snow sensor.

The heater pads consist of heater wire sandwiched between layers of aluminum foil and high-density isolation material under outdoor ecstatic fabric. Heater pads allow for a faster install without the need for templates. Watt density of the heater pads, depending on the reflector, is standard 360 w/m^2 with 700 w/m^2 high version. The aggressive acrylic adhesive adheres to a variety of substrates and will not release when pad temperature increases. Heater blankets have water-resistant military-compliant connectors that plug into the cables from the control unit.

** PALS PAC-550 antenna control unit is compatible with PALS De-Ice System and it can control it without PALS De-Ice Controller.*

Key Features

- Automatic activation decreases De-Icing Operational Costs
- Simple to Field Install and Operate
- Engineered for Requested Specified Voltages
- Reliable rain and snow sensor
- Automatic System that will activate Heaters when the temperature falls below 4°C and precipitation is present
- User selectable Automatic, OFF or Manual ON Modes
- Heaters can be controlled individually
- 120 Single Phase, 240 Single Phase and other 3 Phase options

Environmental Specifications

Operational Temperature :	- 30°C to + 55°C
Storage Temperature :	- 40°C to + 70°C
Rain :	10 cm / h
Relative Humidity :	0 – 100 %
Solar Radiation :	1135 W/m ²
Wind (Operational) :	60 km / h
Wind (Survival) :	120 km / h
Heater Pad Size (total 2 pcs per set):	~ 2.8 m ² / pcs
Heater Pad Capacity (High/Standart):	700 w/m ² / 360 w/m ²